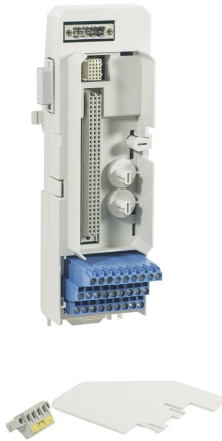


# TU890

## System 800xA hardware selector



The TU891 is a compact MTU for the S800 I/O. The MTU is a passive unit used for connection of the field wiring and power supply to the I/O modules. It also contains a part of the ModuleBus. The TU891 MTU has gray terminals for field signals and process voltage connections. The maximum rated voltage is 50 V and maximum rated current is 2 A per channel, but these are primarily constrained to specific values by the design of the I/O modules for their certified application.

The MTU distributes the ModuleBus to the I/O module and to the next MTU. It also generates the correct address to the I/O module by shifting the outgoing position signals to the next MTU.

### Features and benefits

- Intrinsic safety applications - use with AI890, AI893, AI895, AO890, AO895, DI890 and DO890
- Compact installations of I/O modules
- Field signals and process power connections
- Connections to ModuleBus and I/O modules
- Mechanical keying prevents insertion of the wrong module
- Latching device to DIN rail
- DIN rail mounting

General info	
Article number	3BSC690075R1
Type	Compact
Connection	Terminal block
Channels	8
Voltage	24 V
Mounting	Horizontal
Mounting detail	55 ° (131 °F)
Use with I/O	AI890, AI893, AI895, AO890, AO895, DI890, DO890
Process connections	27 blue terminals
Single/redundant I/O	Single

<b>Detailed data</b>	
Maximum current per I/O channel	2 A
Acceptable wire sizes	Process Connector: Solid 0.2 - 4 mm <sup>2</sup> Stranded 0.2 - 2.5 mm <sup>2</sup> , 24 - 12 AWG Recommended torque 0.5 - 0.6 Nm  Power supply connector: 0.25 - 2.5 mm <sup>2</sup> , 24 - 14 AWG Recommended torque 0.5 - 0.6 Nm
Dielectric test voltage	500 V a.c.

<b>Environment and certification</b>	
CE mark	Yes
Electrical safety	IEC 61131-2, FM
Hazardous Location	ATEX Zone 2 interfacing to Zone 0. Mounting: Ex II 3G Ex nA II T4; Interface: Ex II (1)G [EEx ia] IIC; FM NI/I/2/ABCD/T4 and NI/I/2/IIC/T4
Marine certification	ABS, BV, DNV-GL, LR, RS, CCS
Protection rating	IP20 according to IEC 60529
Corrosive atmosphere ISA-S71.04	G3
Climatic operating conditions	0 to +55 °C (Storage -40 to +70 °C), RH=5 to 95 % no condensation, IEC/EN 61131-2
Pollution degree	Degree 2, IEC 60664-1
Mechanical operating conditions	IEC/EN 61131-2
EMC	EN 61000-6-4, EN 61000-6-2
Overvoltage categories	IEC/EN 60664-1, EN 50178
Equipment class	Class I according to IEC 61140; (earth protected)
RoHS compliance	EN 50581:2012
WEEE compliance	DIRECTIVE/2012/19/EU

<b>Dimensions</b>	
Height	194 mm (7.6 in.) including latch
Width	64 mm (1.77 in.) including connector, 58.5 mm (2.3 in.) edge to edge installed
Depth	58 mm (2.28 in.), 106 mm (4.2 in.) including terminals
Weight	0.17 kg (0.37 lbs.)

---

[www.abb.com/800xA](http://www.abb.com/800xA)  
[www.abb.com/controlsystems](http://www.abb.com/controlsystems)

---

800xA is a registered or pending trademark of ABB. All rights to other trademarks reside with their respective owners.

We reserve the right to make technical changes to the products or modify the contents of this document without prior notice. With regard to purchase orders, the agreed particulars shall prevail. ABB does not assume any responsibility for any errors or incomplete information in this document.

We reserve all rights to this document and the items and images it contains. The reproduction, disclosure to third parties or the use of the content of this document – including parts thereof – are prohibited without ABB's prior written permission.

Copyright© 2019 ABB All rights reserved